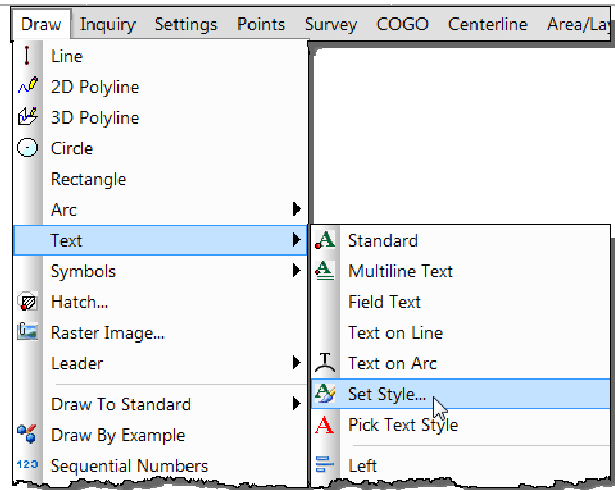


Your drawing screen should now have a **Zoomed** in view of point **5** as shown to the right.

There are a couple of problems with point **5**. The first, and most important, is that it's ugly. We'll fix that by changing the font associated with the **Text Style PTXT**.

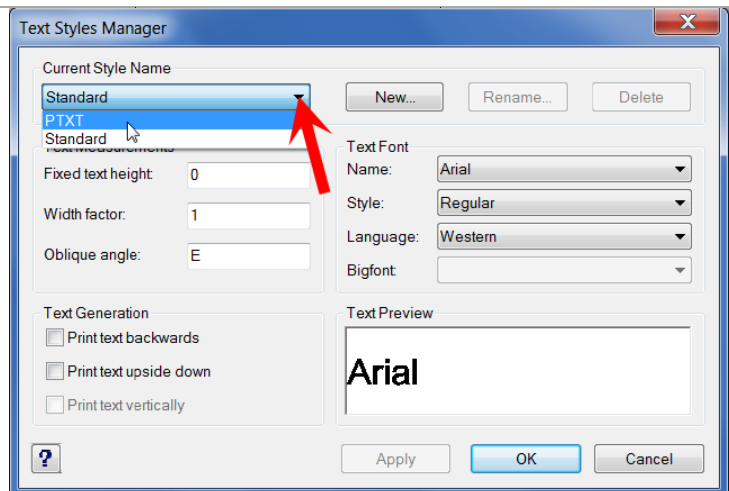
(1-77) Go to the **Draw Menu** and pick **Text**. Then, follow the flyout to pick **Set Style**.



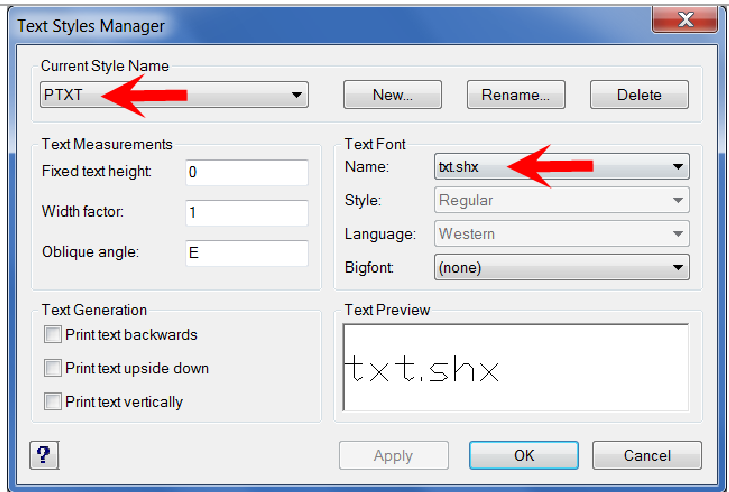
There are some slight variations in the **Text Styles Manager** for **AutoCAD** and **IntelliCAD** but the settings shown here should be easy to find in either.

(1-78) Under **Current Style Name**, pick the drop-down box to see that there are only two defined **Text Styles: Standard** and **PTXT**.

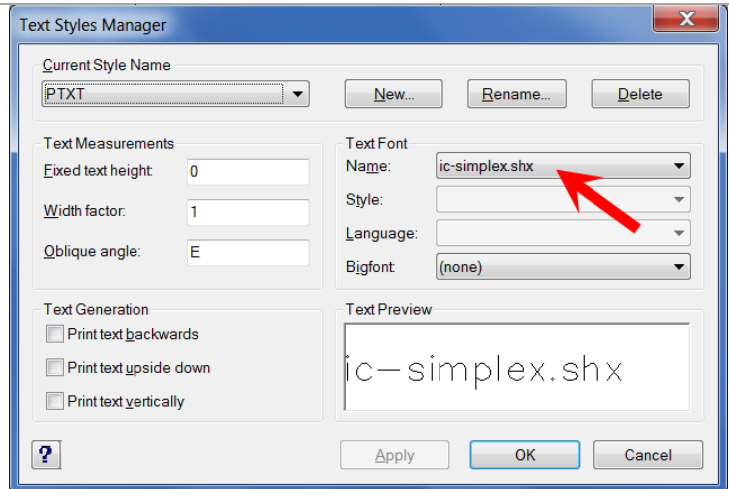
(1-79) Select **PTXT** to make that style current. This is the style used for the **Carlson** point object.



You can see that the current **Font** associated with **Text Style PTXT** is **txt.shx**.



(1-80) Under **Text Font Name**, pick the drop-down box and select **ic-simplex.shx** (in **IntelliCAD**) or **simplex.shx** (in **AutoCAD**).



This assigns the **Simplex** font to **Text Style PTXT**.

(1-81) Pick the **Apply** button to save the changes.

(1-82) Pick the **OK** button to close and return to the drawing.

Much better - The eights look like eights instead of stop signs!

5
 × 87.42
 EIP

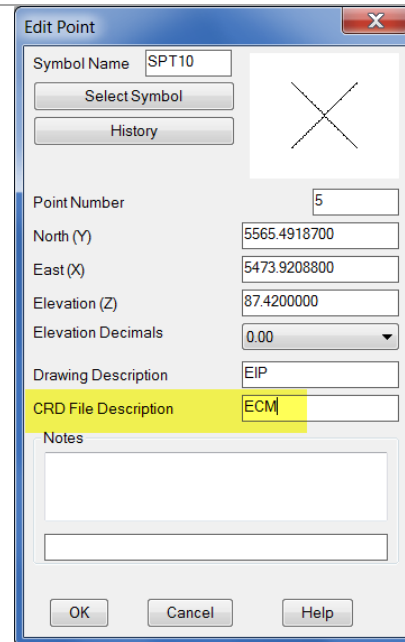
The other problem with our point **5** is that the wrong description was entered in the field and we need to correct it.

(1-83) Double-click on any piece of point **5** to bring up the **Edit Point** dialog.

You can see that the point has two descriptions: a **Drawing Description** and a **CRD File Description**.

(1-84) Change the **CRD File Description** to **ECM**.

(1-85) Pick the **OK** button to close.



Back in the drawing, you'll see that the **Description** of point **5** is still **EIP** even though we changed its **CRD File Description** to **ECM**. This is not what we want. Unless we're using more complex point formatting routines such as **Field to Finish**, we want both descriptions to match.

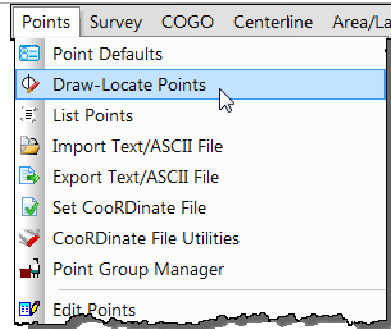
One way to correct this is to repeat what we did above: double left-click on the point and manually change the **Drawing Description** to **ECM** to match its **CRD File Description**.

Another way to update point **5** so that its **Drawing Description** and **CRD File Description** match is to use the **Draw-Locate Points** command to re-draw the point into the drawing from the **CRD File**. By default, the **Draw-Locate Points** command will create the points so that the **Drawing Description** matches the **CRD File Description**.

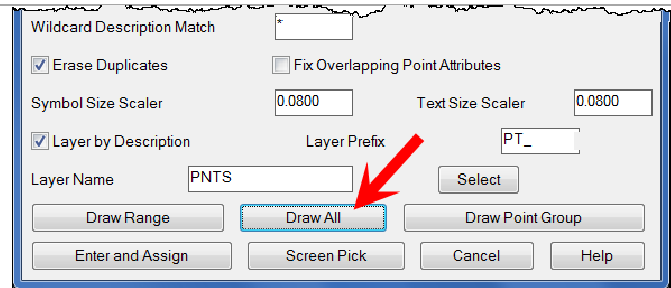
5
 × 87.42
 EIP

Use the **Draw-Locate Points** command to make the **Drawing Description** and the **CRD File Description** match.

(1-86) Go to the **Points Menu** and pick **Draw-Locate Points**.

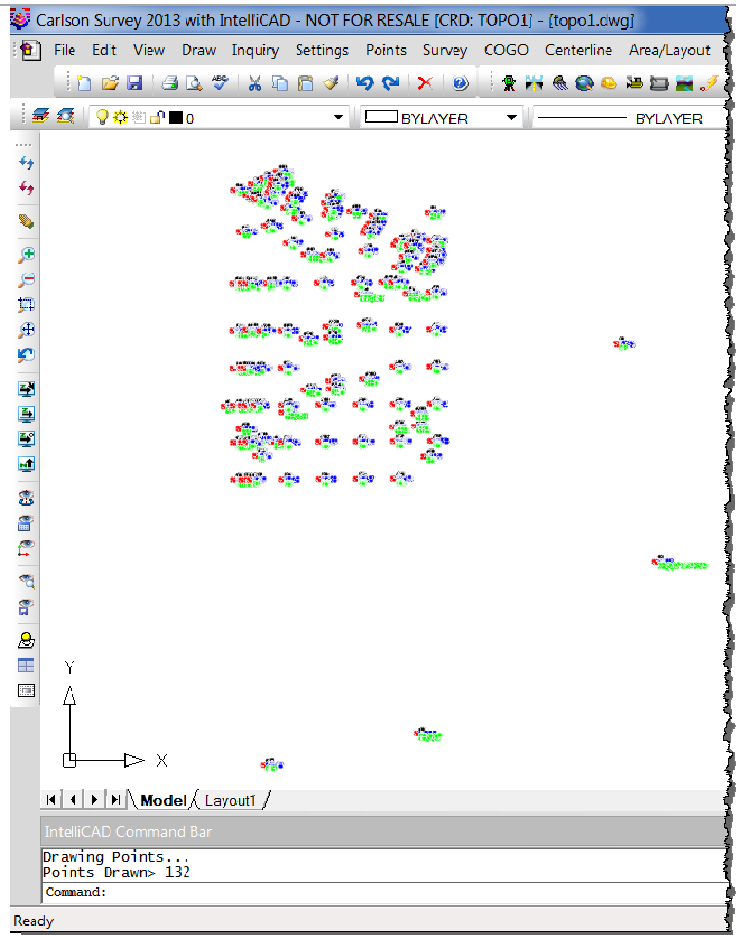


(1-87) In the **Draw-Locate Points** dialog box, make no changes and pick the **Draw All** button at the bottom.



Copying this document in part or in whole without the express written consent of Jennifer DiBona is prohibited.

After **Draw-Locate Points**, the program does an automatic **Zoom Extents** so the view on your screen should again look like the image to the right.



That CAD Girl

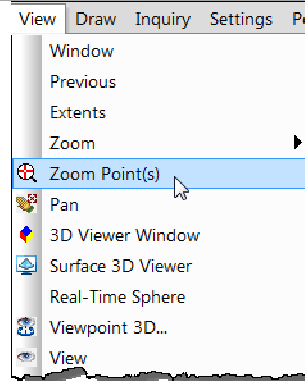
Copying this document in part or in whole without the express written consent of Jennifer DiBona is prohibited.

(1-88) Go to the **View Menu** and pick **Zoom Point(s)**.

(1-89) At the **Command: line**, when prompted to **Find by point number or description** [**<Number>/Desc**]?, type **N** for **Number** and then press **Enter**.

(1-90) When prompted for **Point number or range of point numbers to find** **<5>:**, type **5** and then press **Enter**.

(1-91) When prompted for **Magnification or Height**, type **50** and then press **Enter**.



Your drawing screen should now have a **Zoomed** in view of point **5**.

(1-92) Double left-click on any piece of point **5** to bring up the **Edit Point** dialog.

You can see that the **Drawing Description** and **CRD File Description** now match.

(1-93) Pick the **OK** button to close.

5
87.42
ECM

